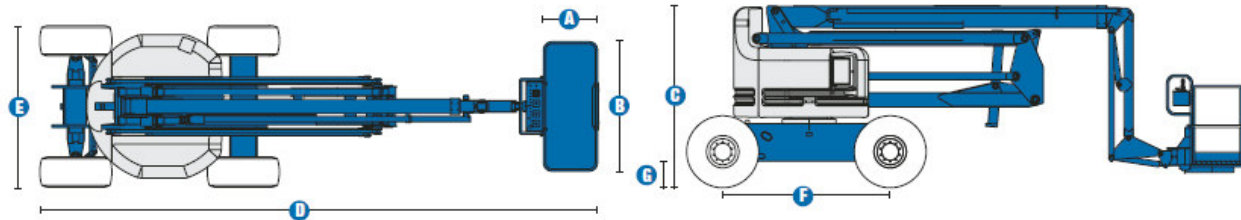
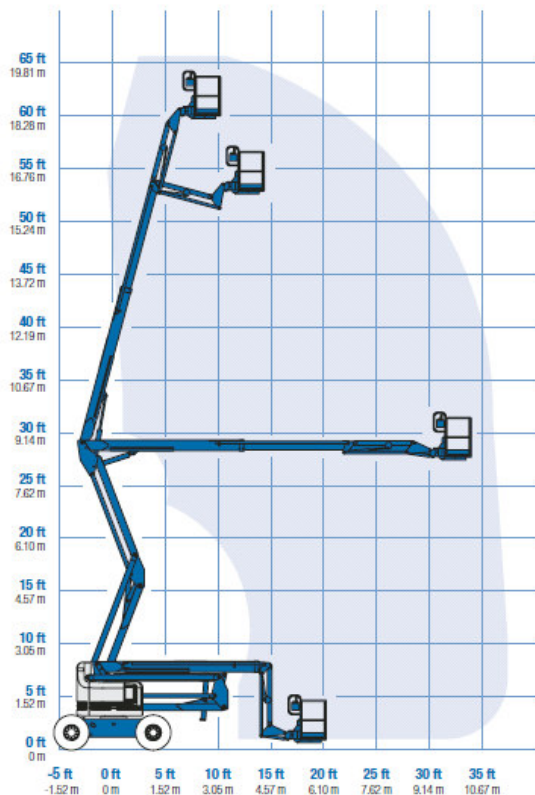


Specifications



MODEL	Z™-60/34	
MEASUREMENTS	Metric	US
Working height max*	20.39 m	66 ft 4 in
Platform height max	18.39 m	60 ft 4 in
Horizontal reach max	10.36 m	34 ft
Up and over clearance max	8.23 m	27 ft
A Platform length - 6 ft / 8 ft model	76 cm / 91 cm	2 ft 6 in / 3 ft
B Platform width - 6 ft / 8 ft model	1.83 m / 2.44 m	6 ft / 8 ft
C Height - stowed	2.69 m	8 ft 10 in
D Length - stowed	8.15 m	26 ft 9 in
E Width	2.46 m	8 ft 1 in
F Wheelbase	2.54 m	8 ft 3 in
G Ground clearance - centre	41 cm	1 ft 4 in

RANGE OF MOTION Z™-60/34



PRODUCTIVITY		
Lift capacity	227 kg	500 lbs
Platform rotation	180°	
Turntable rotation	360° continuous	
Turntable tailswing	zero	
Drive speed - stowed	4.8 km/h	3.0 mph
Drive speed - raised**	1.1 km/h	0.68 mph
Gradeability - 2WD***	25%	25%
Gradeability - 4WD***	40%	40%
Turning radius - inside	3 m	10 ft
Turning radius - outside	6.07 m	19 ft 11 in
Controls	12 V DC proportional	
Tyres	385/65 D19.5, 12 ply	

POWER		
Power source	Deutz F3L 2011 3 cylinder diesel 48 hp (35.8 kW) Perkins 404C-22 4 cylinder diesel 51 hp (38.0 kW)	
Auxiliary power unit	12 V DC	
Hydraulic tank capacity	170.4 L	45 gal
Fuel tank capacity	75.7 L	20 gal

WEIGHT****		
	10,215 kg	22,520 lbs

STANDARDS COMPLIANCE CE EN280

* The metric equivalent of working height adds 2 m to platform height. U.S. adds 6 ft to platform height.
 ** In lift mode (platform raised), the machine is designed to operate on firm, level surfaces only.
 *** Gradeability applies to driving on slopes. See operators manual for details regarding slope ratings.
 **** Weight will vary depending on options and/or country standards.

Features

EASILY CONFIGURED TO MEET YOUR NEEDS

PLATFORM OPTIONS

- Steel 1.83 m (6 ft) (standard)
- Steel 2.44 m (8 ft)
- 1.83 or 2.44 m (6 or 8 ft) tri-entry

JIB

- Standard 1.83 m (6 ft) jib boom

POWER OPTIONS

- Deutz 48 hp (35.8 kW) diesel
- Perkins 51 hp (38 kW) diesel

DRIVE OPTIONS

- 2WD
- 4WD

AXLE OPTIONS

- Oscillating (standard on 4WD)
- Non-oscillating

TYRE OPTIONS

- Rough terrain air-filled (standard)
- Rough terrain foam-filled
- Rough terrain, non-marking (air or foam filled)

STANDARD FEATURES

MEASUREMENTS

- 20.39 m (66 ft 4 in) working height
- 10.36 m (34 ft) horizontal reach
- 8.23 m (27 ft) up and over clearance
- Up to 227 kg (500 lb) lift capacity

PRODUCTIVITY

- Self-leveling platform
- Hydraulic platform rotation
- Fully proportional controls
- Drive enable
- AC power to platform
- Horn
- Hour meter
- Tilt alarm
- 360° continuous turntable rotation
- Locking turntable covers
- Zero tailswing
- Positive traction drive
- Fully certified load sensor

POWER

- All engines are emissions compliant
- 12 V DC auxiliary power
- Engine protection package

STANDARD FEATURES cont.

POWER cont.

- Anti-restart engine protection
- Auto engine fault shutdown
- Deutz intake air heater



OPTIONS & ACCESSORIES

PRODUCTIVITY

- Platform swing gate
- Half mesh platform inserts with swing gate
- Platform top auxiliary rail
- Hydraulic oil cooler
- Air line to platform
- Arctic hydraulic oil
- Arctic hose option (boom hoses only)
- Deluxe aircraft protection package
- Basic hostile environment kit
- Deluxe hostile environment kit
- Thumb rocker steer
- Tool tray
- Fluorescent tube caddy
- Pipe cradle (pair)
- Alarm package
- Panel cradle package*
- Platform work lights
- Front driving lights
- Lockable platform control box covers

*Available on select models

POWER

- Engine gauge package
- AC generator packages (2500 or 3000 watts)
- Cold start packages
- Diesel scrubber/spark arrestor
- Diesel spark arrestor muffler

European Offices

UK

The Maltings
Wharf Road
Grantham NG31 6BH
UK
Tel: +44 (0)1476 584333
Fax: +44 (0)1476 584334

France

10, ZA de la Croix St. Mathieu
28320 Gallardon
France
Tel: +33 (0)2 37 26 09 99
Fax: +33 (0)2 37 26 09 98

Germany

Finienweg 3
28832 Achim/Bremen
Germany
Tel: +49 (0)4202 8852-0
Fax: +49 (0)4202 8852-20

Spain

Gaià 31, Pol. Ind. Plà d'en Coll
08110 Montcada i Reixac
Barcelona
Spain
Tel: +34 93 572 50 90
Fax: +34 93 572 50 91

Scandinavia

Tagenevägen 72
425 37 Hisings Kärra
Sweden
Tel: +46 31 57 51 00
Fax: +46 31 57 90 20

Genie United States

18340 NE 76th Street
P.O. Box 97030
Redmond, Washington 98073-9730
USA
Tel: +1 425 881-1800
Fax: +1 425 883-3475

WEB: www.genieindustries.com
Email: infoeurope@genieind.com

Distributed By:



douwes materieel bv

de rysloane 2 - 9281 km harkema
telefoon 0512-364499 fax 365152
email: info@materieel.com
k.v.k. leeuwarden nr. 01085043
btw nr. NL 809582181B01