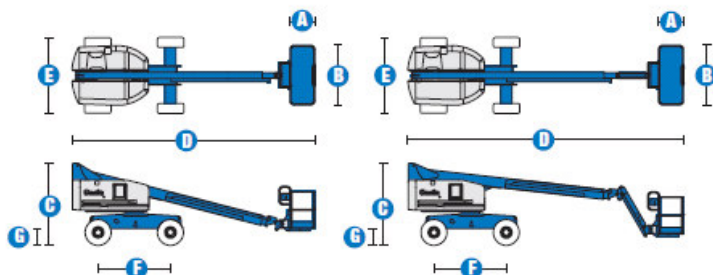


# Specifications



MODELS	S™-40		S™-45	
MEASUREMENTS	Metric	US	Metric	US
Working height maximum*	14.20 m	46 ft	15.72 m	51 ft
Platform height maximum	12.20 m	40 ft	13.72 m	45 ft
Horizontal reach maximum	9.70 m	31 ft 8 in	11.21 m	36 ft 8 in
Below ground reach	97 cm	3 ft 2 in	1.5 m	4 ft 11 in
<b>A</b> Platform length - 8 ft model	91 cm	3 ft	91 cm	3 ft
Platform length - 6 ft model	76 cm	2 ft 6 in	76 cm	2 ft 6 in
<b>B</b> Platform width - 8 ft model	2.44 m	8 ft	2.44 m	8 ft
Platform width - 6 ft model	1.83 m	6 ft	1.83 m	6 ft
<b>C</b> Height - stowed	2.49 m	8 ft 2 in	2.49 m	8 ft 2 in
<b>D</b> Length - stowed	7.39 m	24 ft 3 in	8.48 m	27 ft 10 in
- transport (jib tucked under)			6.80 m	22 ft 4 in
<b>E</b> Width (with standard tyres)	2.30 m	7 ft 6 in	2.30 m	7 ft 6 in
<b>F</b> Wheelbase	2.20 m	7 ft 3 in	2.20 m	7 ft 3 in
<b>G</b> Ground clearance - centre	32 cm	1 ft 0.5 in	32 cm	1 ft 0.5 in

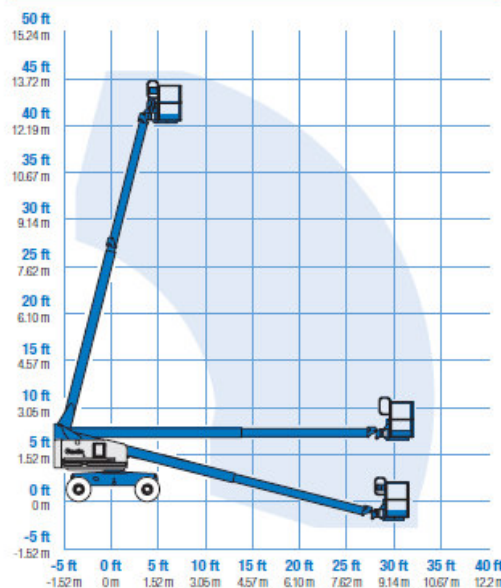
PRODUCTIVITY				
Lift capacity	227 kg	500 lbs	227 kg	500 lbs
Platform rotation	160°	160°	160°	160°
Vertical jib rotation			135°	135°
Turntable rotation	360° continuous		360° continuous	
Turntable tailswing	86 cm	2 ft 10 in	86 cm	2 ft 10 in
Drive speed - stowed	7.7 km/h	4.8 mph	7.7 km/h	4.8 mph
Drive speed - raised or extended	1.1 km/h	0.68 mph	1.1 km/h	0.68 mph
Gradeability - 2WD - stowed**	30%	30%	30%	30%
Gradeability - 4WD - stowed**	40%	40%	40%	40%
Turning radius - inside	2 m	6 ft 8 in	2 m	6 ft 8 in
Turning radius - outside	4.78 m	15 ft 8 in	4.78 m	15 ft 8 in
Controls	12 V DC proportional		12 V DC proportional	
Tyres - RT lug (rear)	12-16.5 NHS		12-16.5 NHS	

POWER				
Power source	Ford DSG 423 4 cylinder petrol/LPG 75 hp (56 kW) Deutz D 2011 L03i cylinder diesel 48 hp (36 kW) Perkins 404D-22 4 cylinder diesel 51 hp (38 kW)			
Auxiliary power unit	12 V DC	12 V DC	12 V DC	12 V DC
Hydraulic tank capacity	170 L	45 gal	170 L	45 gal
Fuel tank capacity	76 L	20 gal	76 L	20 gal

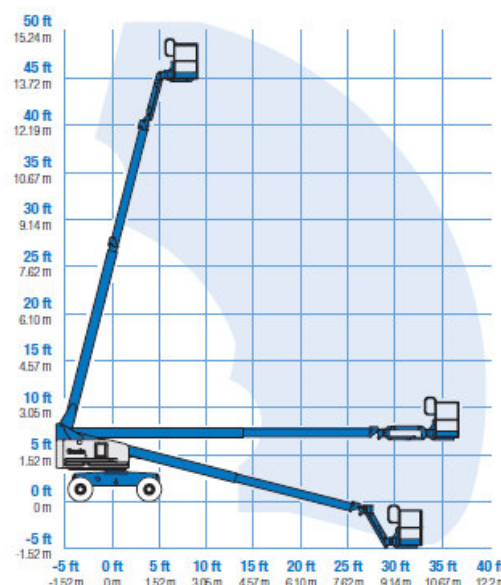
WEIGHT***				
CE air	5,284 kg	11,650 lbs	6,709 kg	14,790 lbs
CE Foam filled	5,580 kg	12,302 lbs	7,005 kg	15,443 lbs

STANDARDS COMPLIANCE	CE EN280, PB-10-611-03
----------------------	------------------------

## RANGE OF MOTION S™-40



## RANGE OF MOTION S™-45



**dowes**  
materieel op maat

\* The metric equivalent of working height adds 2 m to platform height. U.S. adds 6 ft to platform height.

\*\* Gradeability applies to driving on slopes. See operator's manual for details regarding slope ratings.

\*\*\* Weight will vary depending on options and/or country standards.

## Features

### EASILY CONFIGURED TO MEET YOUR NEEDS

#### PLATFORM OPTIONS

- Steel 2.44 m (8 ft) (standard)
- Steel 1.83 m (6 ft)
- Steel 2.44 m (8 ft) tri-entry

#### JIB OPTIONS

- Non-jib
- 1.52 m (5 ft) jib boom

#### POWER OPTIONS

- Ford petrol/LPG 75 hp (56 kW)
- Deutz diesel 48 hp (36 kW)
- Perkins diesel 51 hp (38 kW)

#### DRIVE OPTIONS

- 2 x 4
- 4 x 4

#### AXLE OPTIONS

- Active oscillation
- Non-oscillating

#### TYRE OPTIONS

- Rough terrain air-filled (standard)
- Rough terrain foam-filled
- Rough terrain non-marking air or foam-filled
- Tire sealant (air filled only)

### STANDARD FEATURES

#### MEASUREMENTS

##### S™-40

- 14.20 m (46 ft) working height
- 9.70 m (31 ft 8 in) horizontal reach
- Up to 227 kg (500 lb) lift capacity

##### S™-45

- 15.72 m (51 ft) working height
- 11.21 m (36 ft 8 in) horizontal reach
- Up to 227 kg (500 lb) lift capacity

#### PRODUCTIVITY

- Self-levelling platform
- Hydraulic platform rotation
- Fully proportional Hall effect joystick controls
- Thumb rocker steer
- Drive enable
- AC power to platform
- Tilt alarm
- Descent alarm
- Horn
- Hour meter
- 360° continuous turntable rotation
- Locking, low profile turntable covers
- Positive traction drive
- Two speed wheel motors
- Certified load sensor

### STANDARD FEATURES cont

#### POWER

- All engines are emissions compliant
- 12 V DC auxiliary power
- Anti-restart engine protection
- Auto engine fault shutdown
- Deutz intake air heater



### OPTIONS & ACCESSORIES

#### PRODUCTIVITY

- Platform swing gate
- Half-mesh platform inserts with swing gate
- Platform top auxiliary rail
- Weld leads to platform
- Air line to platform
- Hydraulic oil cooler
- Fire resistant hydraulic oil
- Biodegradable hydraulic oil
- Basic hostile environment kit
- Deluxe hostile environment kit
- Deluxe aircraft protection package (6 ft platform only)
- Tool tray
- Fluorescent tube caddy
- Pipe cradle (pair)
- Alarm package (travel and flashing beacons)
- Panel cradle package\* (foam filled tires)
- Platform work lights
- Front driving lights
- Lockable platform control box covers
- Tow package

#### POWER

- Engine gauge package
- AC Generator Packages (110V/60Hz, 3000 W or 220V/50Hz, 2500 W)
- Cold weather packages
- Arctic hoses
- Diesel scrubber/spark arrestor muffler
- LPG tank 15.19 kg (33.5 lb) capacity
- Additional LPG tank with carrier
- Intake air precleaner

\*Available on select models

#### UK

Millennium House  
Brunel Drive  
Newark NG24 2DE  
UK  
Tel: +44 (0)1476 584333  
Fax: +44 (0)1476 584334

#### France

10, ZA de la Croix St. Mathieu  
28320 Gallardon  
France  
Tel: +33 (0)2 37 26 09 99  
Fax: +33 (0)2 37 26 09 98

#### Germany

Finienweg 3  
28832 Achim/Bremen  
Germany  
Tel: +49 (0)4202 8852-0  
Fax: +49 (0)4202 8852-25

#### Spain

Gaià 31, Pol. Ind. Plá d'en Coll  
08110 Montcada i Reixac  
Barcelona  
Spain  
Tel: +34 93 572 50 90  
Fax: +34 93 572 50 91

#### Scandinavia

Importgatan 17  
422 46 Hisings Backa  
Sweden  
Tel: +46 31 57 51 00  
Fax: +46 31 57 90 20

#### Middle East

Terex Middle East  
PO Box 282325, Dubai  
U.A.E.  
Tel: +971 4 885 8030  
Fax: +971 4 885 6364  
Email: awp.infome@terex.com

#### Genie United States

18340 NE 76th Street  
P.O. Box 97030  
Redmond, WA  
USA 98073-9730  
Tel: +1 425 881-1800  
Fax: +1 425 883-3475

Email: AWP-InfoEurope@terex.com

#### Distributed By:

  
**douwes**  
materieel op maat

De Rysloane 2  
9281 KM Harkema  
Tel : 0512-364499  
Fax : 0512-365152  
Email : info@materieel.com  
Web : www.materieel.com