

SCANLIFT^{SL} 190



Patu Scanlift Electric, Power Package for inside use.



Reliable Hydraulic Control System.

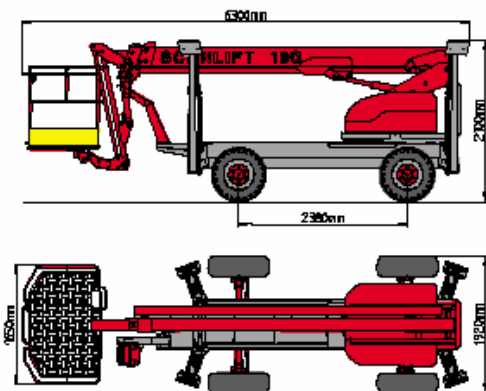
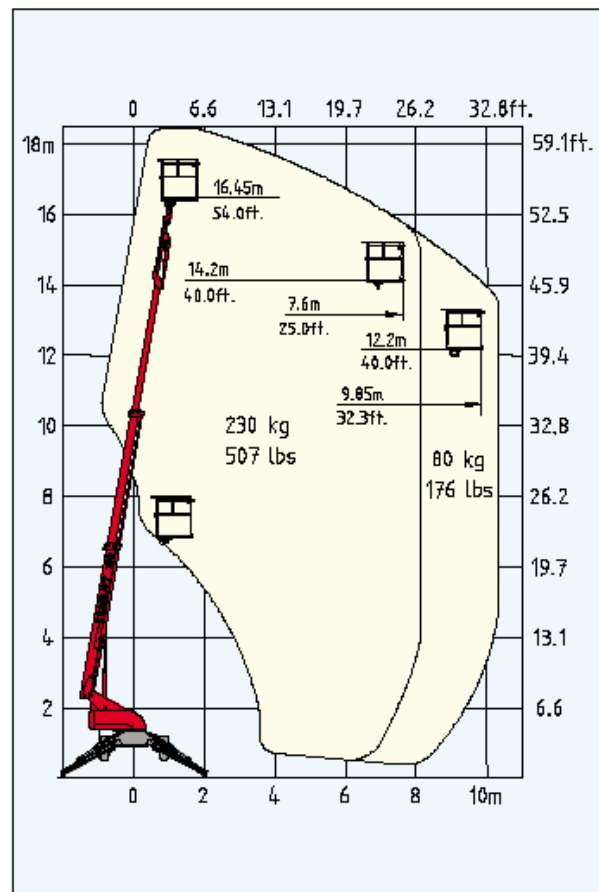
PATU ■■■

SCANLIFT^{SL} 190

SPECIFICATIONS

HEIGHT			
Working Height	18,45 m	60'6"	
Platform Height	16,45 m	54'	
DIMENSIONS			
Transport Length	6,3 m	20'8"	
Width	1,92 m	76"	
Height	2,15 m	85"	
Platform Dimensions	1,0 x 1,5 m	3'4"x4'11"	
Wheel Base	2,38 m	94"	
Support width	3,9 m	12'10"	
WORK SPECIFICATIONS			
Boom Type	Telescoping with Flyboom		
Boom Construction	Steel		
Platform Capacity	230 kg	507 lbs	
Working Lift Radius / 230 kg	8,1 m	26'7"	
Working Lift Radius / 120 kg	9,65 m	31'8"	
Working Lift Radius / 80 kg	10,35 m	34'	
Cage Swing, Side to side	90°	90°	
Turning Radius to tire side	3 m	9'10"	
- to platform outer side	5 m	16'5"	
Boom Rotation	360° Continuous		
Ground Clearance	0,38 m	1'3"	
Gradeability	35%/16°	35%/16°	
OPERATING SPEED			
Fast	3,6 km/hr (2,2 mph)		
POWER TRAIN & CAPACITIES			
Standard Features	4 WD, max Pulling Power 15.400 N 2 WS, 4 WS, Crab Steer Oscillating Axle Hydraulic Platform Rotation 12 V Battery Operated Emergency Pump		
Drive System:	Hydraulic 4WD, 2 Speed		
Engine options:			
Kohler Command Gasoline/LPG	14,9 kW/20,0 hp	2 Cyl Air-Cooled	
Lombardini diesel	16,8 kW/22,8 hp	3 Cyl Water-Cooled	
Electric Power Unit	240V/50 Hz	2,2 kW (optional)	
Fuel Capacity;	60 l	16 gal U.S.	
Control System	Hydraulic Powered, Stepples Motion		
Brakes:	Hydraulic Disc, Spring Applied Hydraulic Release		
Battery	12 VDC 75 Ah		
Tyre Size (Standard)	10/75-15,3	Optional Sizes	Available
SHIPPING WEIGHT			
Gasoline/Diesel	3080/3130 kg		

BOOM GEOMETRY



Manufacturer:

KESLA OYJ

Factory: Metsolantie 2
FIN-59800 Kesälahti
FINLAND
Phone +358-13-682 841
Fax +358-13-682 8100

Export: P.O.Box 282 (Kuurnankatu 24)
FIN-80101 Joensuu
FINLAND
Phone +358-13-682 8323
Fax +358-13-682 8330

Distributor:



douwes materieel bv

de rysloane 2 - 9281 km harkema
telefoon 0512-364499 fax 365152
email: info@materieel.com
k.v.k. leeuwarden nr. 01085043
btw nr. NL 809582181B01